

Mohawk Valley Water Authority Capital Improvement Program Pond Lane PRV Chamber Installation

The first pre-engineered, factory tested and fully operable PRV Chamber to be utilized by the MVWA. This new chamber was installed to replace a very small manhole type chamber with inoperable valves. The work was accomplished in several days as opposed to several weeks if constructed on site. The station was in service one day after final connections were made.



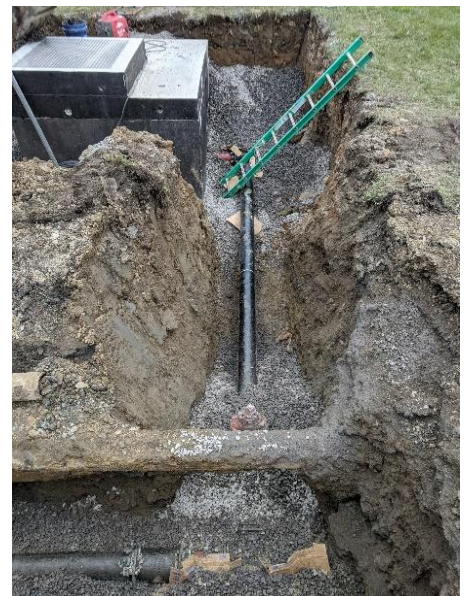
Excavation at Pond Lane & Albany Street.



Rig-All setting the Chamber.



New 6" & 2" PRV and Isolating Valves.



Connections to existing Main in Albany Street.